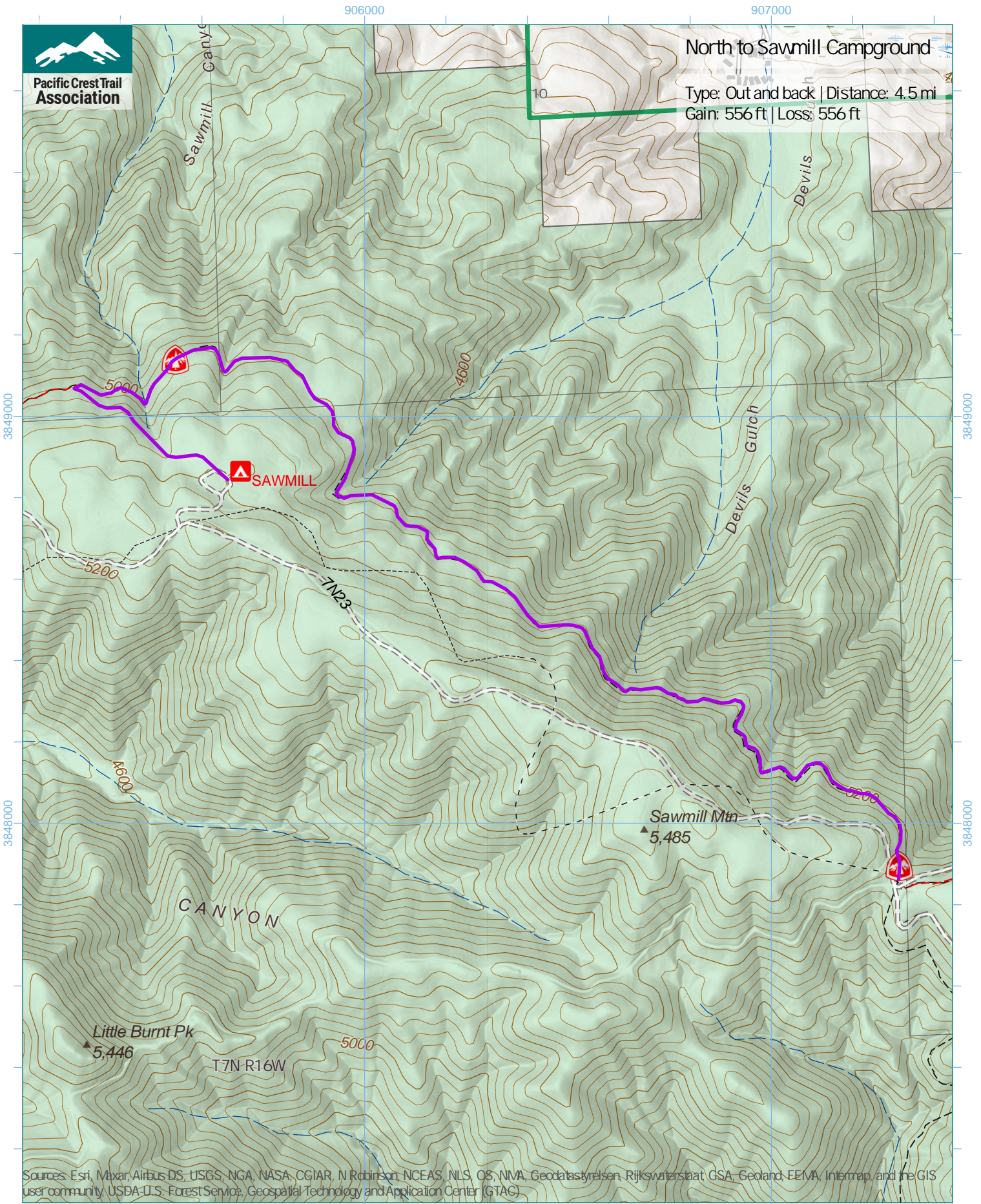




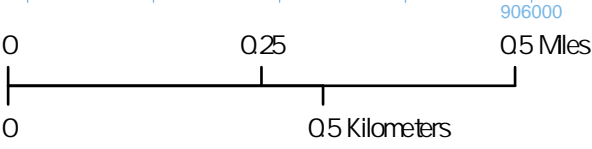
Pacific Crest Trail Association

### North to Sawmill Campground

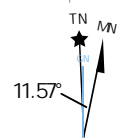
Type: Out and back | Distance: 4.5 mi  
Gain: 556 ft | Loss: 556 ft



Sources: Esri, Maxar, Airbus DS, USGS, NGA, NASA, CGIAR, N Robinson, NCEAS, NLS, OS, NMA, Geodatastyrelsen, Rijkswaterstaat, GSA, Geoland, FEMA, Intermap, and the GIS user community, USDA-U.S. Forest Service, Geospatial Technology and Application Center (GTAC)



1 inch equals 1,000 feet  
1:12,000  
WGS 1984 UTM Zone 10N



Trip data by PCTA  
Basemap by US Forest Service  
Contour interval: 40ft